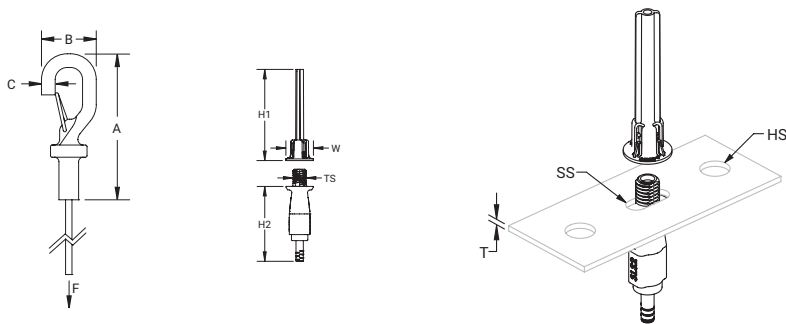


Speed Link SLS with Hook



- Complete system includes wire, locking device and pre-assembled hook end fitting
- Hooks to a wide range of nVent CADDY fasteners
- Fastens to the building structure or hanging services by looping around and hooking to wire rope
- Easy to remove for applications requiring maintenance
- Spring latch helps provide secure connection
- Insert cable through hole and use bottom side of hook as an end stop



Material: Steel; Polypropylene; Zinc Alloy

Finish: Electrogalvanized

Static Load Safety Factor: 5:1

Wire Rope Diameter: 2 mm



Part Number	SLS2L1	SLS2L2	SLS2L3	SLS2L5	SLS2L7	SLS2L10
Wire Rope Length	3.3'	6.6'	9.9'	16.4'	22.9'	32.8'
A	2.24"					
B	0.79"					
C	0.22"					
Height 1 (H1)	2.1"					
Height 2 (H2)	1.7"					
Thread Size (TS)	M8					
Width (W)	0.63"					
Hole Size (HS)	0.31" – 0.38"					
Slot Size (SS)	0.31" x 0.25" - 0.31" x 0.38"					
Thickness (T)	0.15" Max					
Static Load (F)	60 lb					
Standard Packaging Quantity	10 pc					

Wire Rope Diameter: 3 mm

Part Number	SLS3L1	SLS3L2	SLS3L3	SLS3L5	SLS3L7	SLS3L10
Wire Rope Length	3.3'	6.6'	9.9'	16.4'	22.9'	32.8'
A	2.27"					
B	0.91"					
C	0.24"					
Height 1 (H1)	2.1"					
Height 2 (H2)	1.8"					
Thread Size (TS)	M12					
Width (W)	0.80"					
Hole Size (HS)	0.50" – 0.56"					
Slot Size (SS)	0.47" x 0.39" - 0.47" x 0.56"					
Thickness (T)	0.25" Max					
Static Load (F)	150 lb					
Standard Packaging Quantity	10 x 10 pc		10 x 5 pc		5 x 5 pc	

The 2 mm locking device is compatible with C-Channel Types E0 and E0L.

The 3 mm locking device is compatible with C-Channel Types E1, E2, E2L, E3, E4, E5, Strut Channel Type C, Slotted, Strut Channel Type A, Slotted, Strut Channel Type AS, Perforated, Strut Channel Type CC, Slotted, Strut Channel Type AA, Slotted.

Total load per wire on a multi-tier trapeze must not exceed static load.